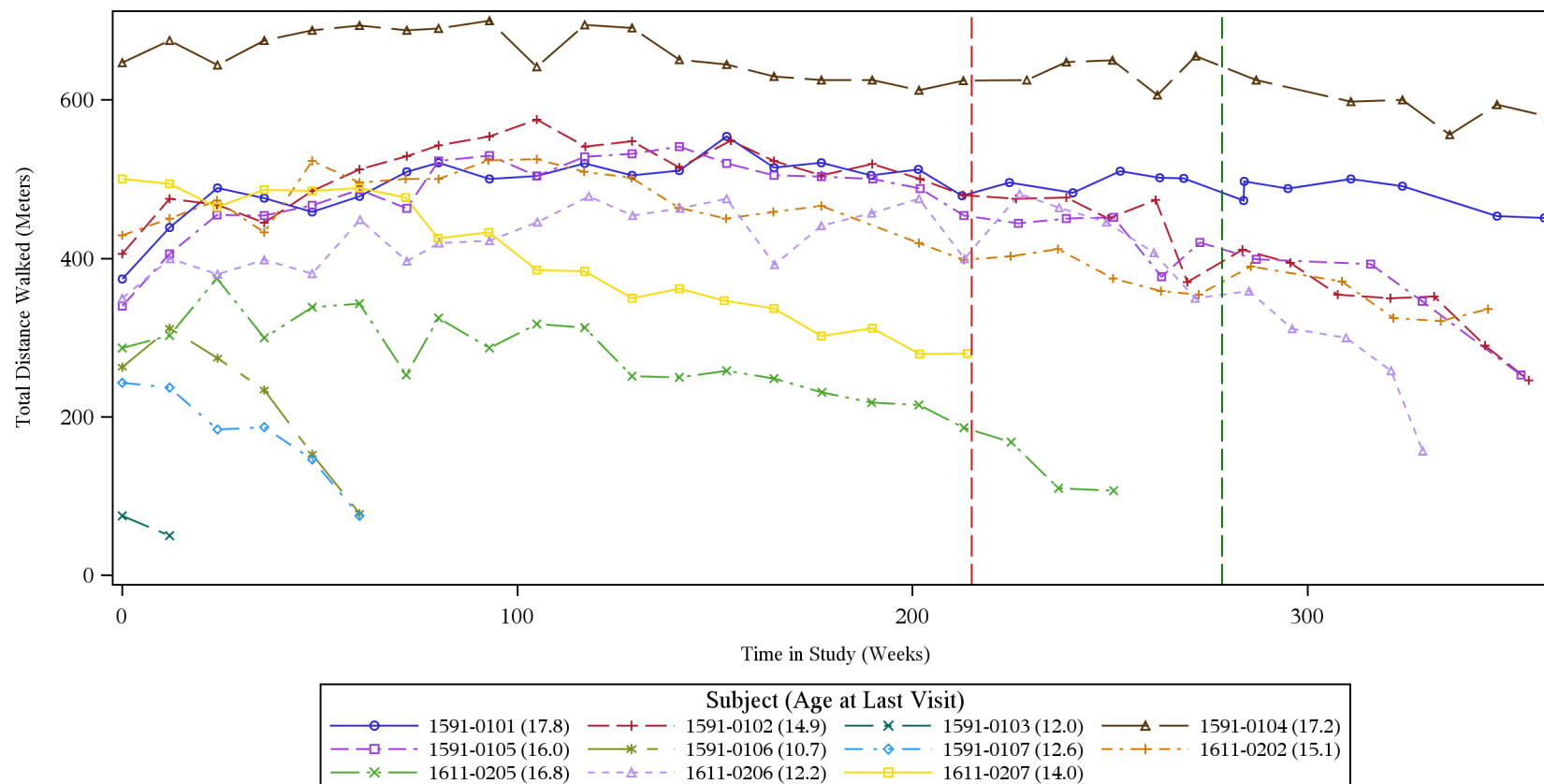


Figure 1.1
Plot of 6-Minute Walking Distance Test by Timepoint
Analysis Population: Intent-to-Treat



Age at Last Visit represents the subject's age in years at the last non-missing 6-Minute Walking Distance Test visit.

The red vertical line represents the end of the IV Sub-Study Period (dosing hold), the green vertical line represents the start of re-dosing.

Report: Final ja895491 15NOV2016 07:03 /ace/aceprd/drisapersen/dmd/114673/csr/output/stat/fig/g_01.1_6mwd_plot.pdf+rtf

Source: /ace/aceprd/drisapersen/dmd/114673/csr/progstat/g_6mwd.sas, Database: Locked - extracted on 18OCT2016:08:42:39